



Green City, Zürich

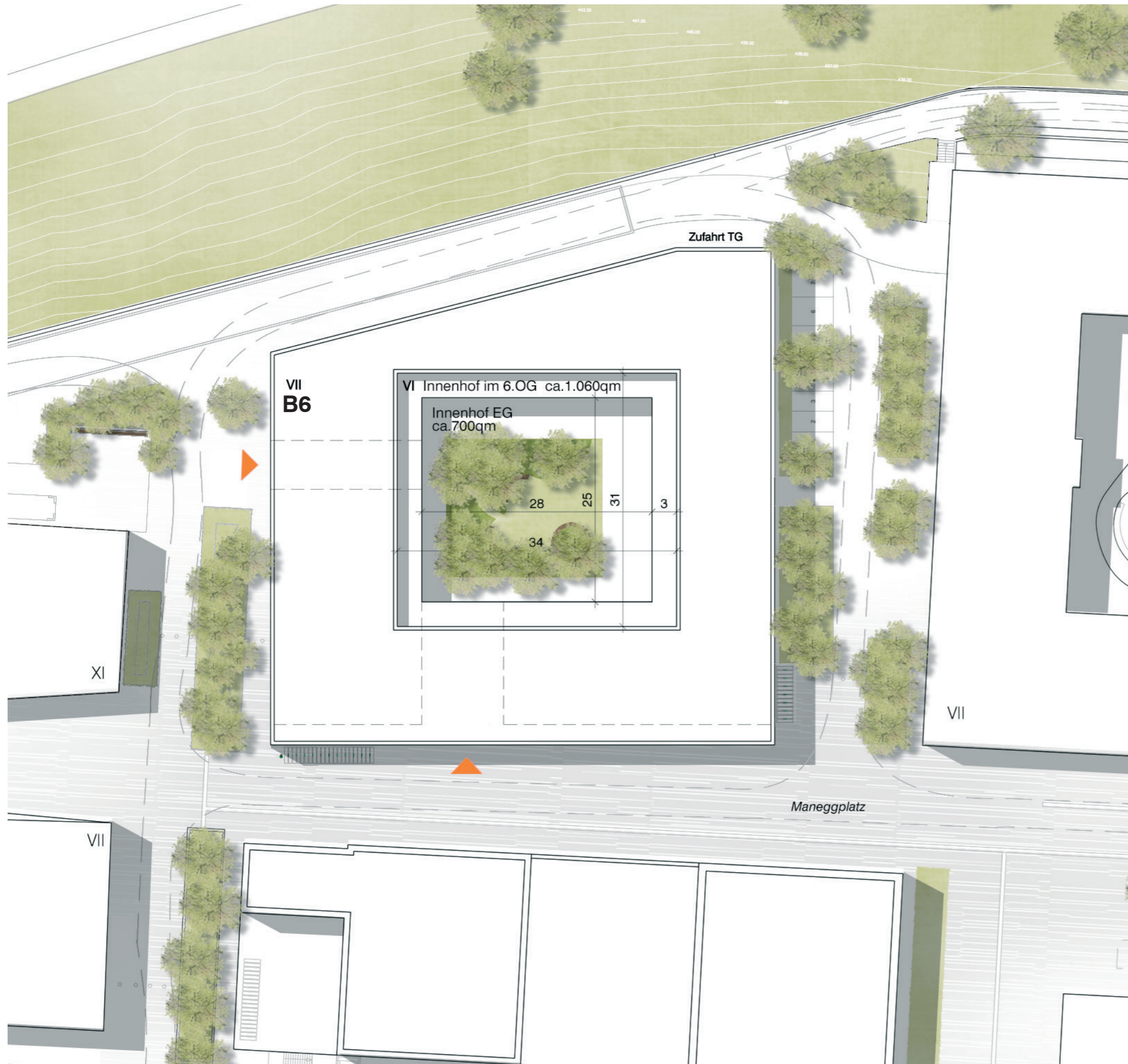
Machbarkeitsstudie Seniorenresidenz

07. Oktober 2020



VOGT JSWD

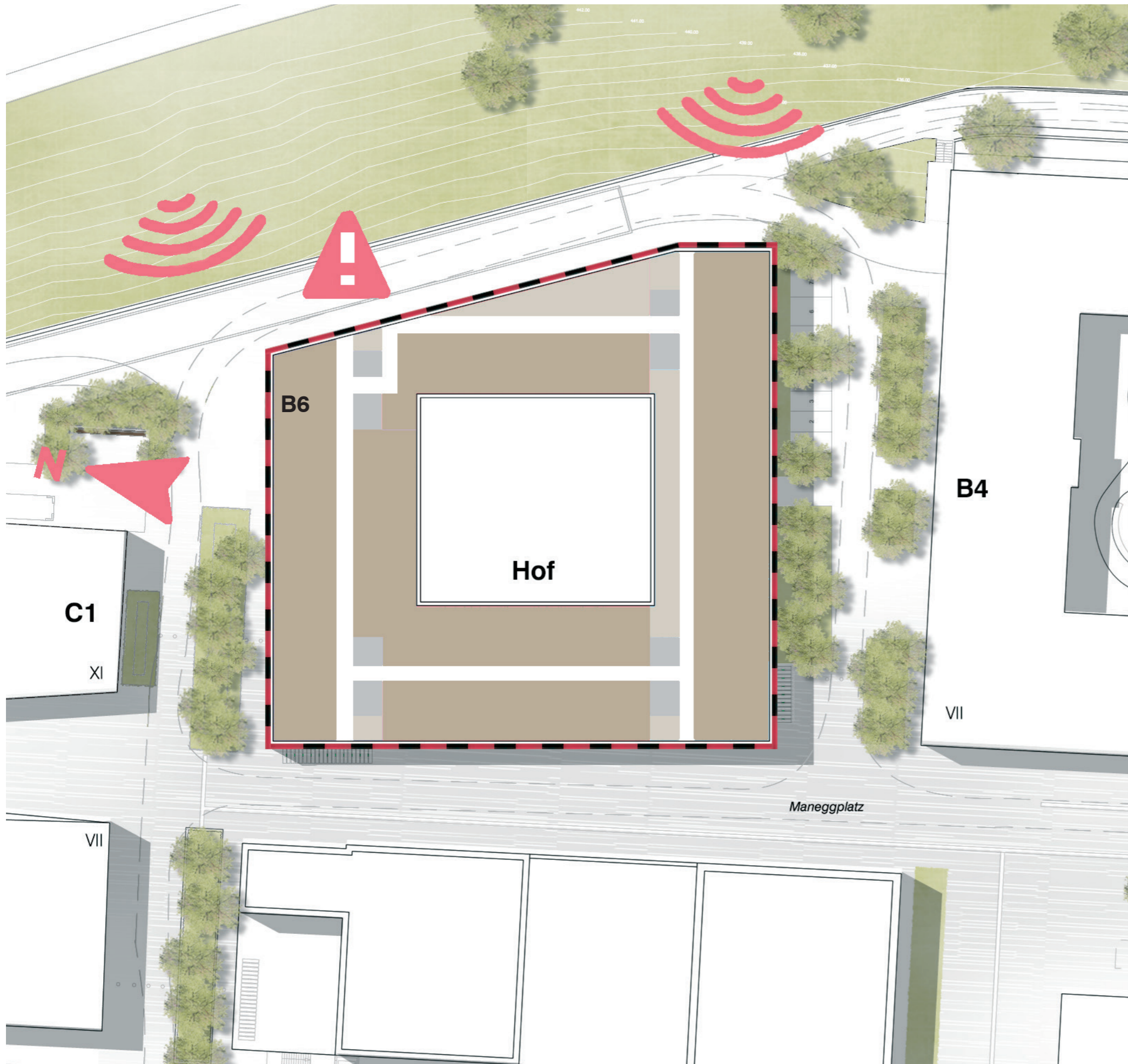
TEIL 1 ARCHITEKTUR



GF
 (inkl Aussen-Geschossfläche in den OGs
 Geschossfläche)

UG	2.310 m ²
EG	2.420 m ²
1.OG	2.730 m ²
2.OG	2.730 m ²
3.OG	2.730 m ²
4.OG	2.730 m ²
5.OG	2.730 m ²
6.OG	2.175 m ²
Gesamt	20.555 m²

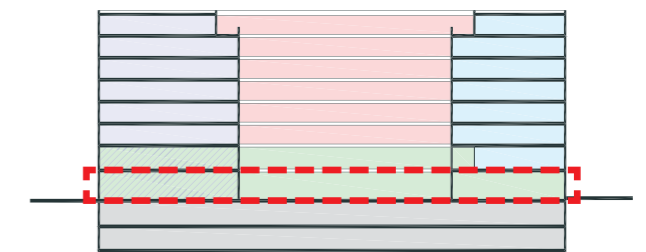
Herleitung und Prüfung
schematischer Gebäudeformen





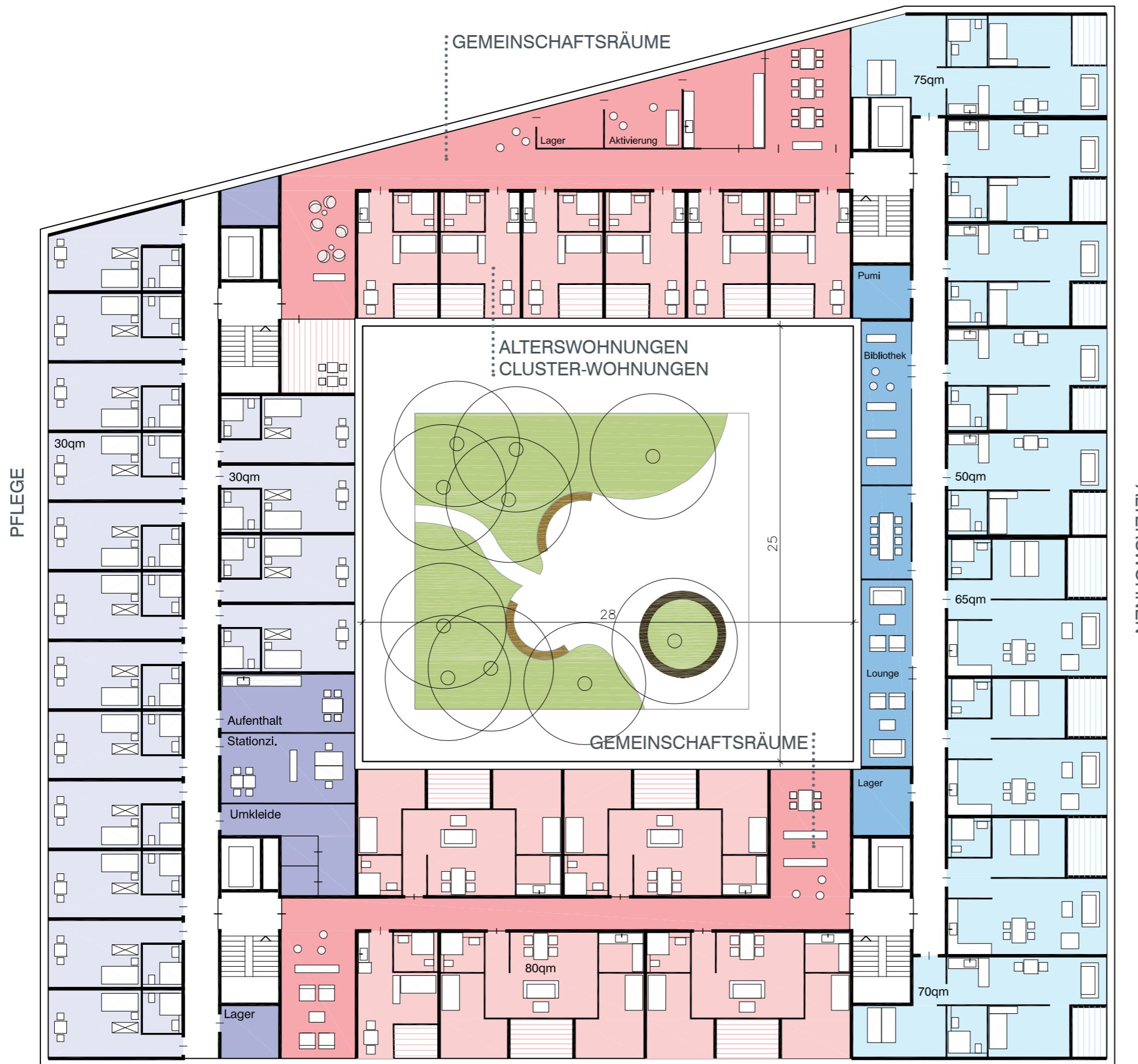


	NF Nutzfläche	NF+ANF NF+Aussennutzfläche
UG	1.715 m ²	1.715 m ²
EG	1.820 m ²	1.820 m ²
1.OG	2.050 m ²	2.185 m ²
2.OG	2.050 m ²	2.185 m ²
3.OG	2.050 m ²	2.185 m ²
4.OG	2.050 m ²	2.185 m ²
5.OG	2.050 m ²	2.185 m ²
6.OG	1.764 m ²	2.174 m ²
Gesamt	15.549 m²	16.634 m²

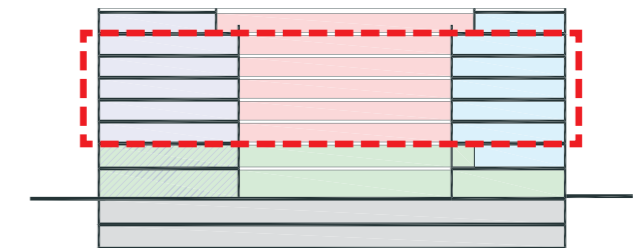


Gewerbe / Dienstleistungen

B6



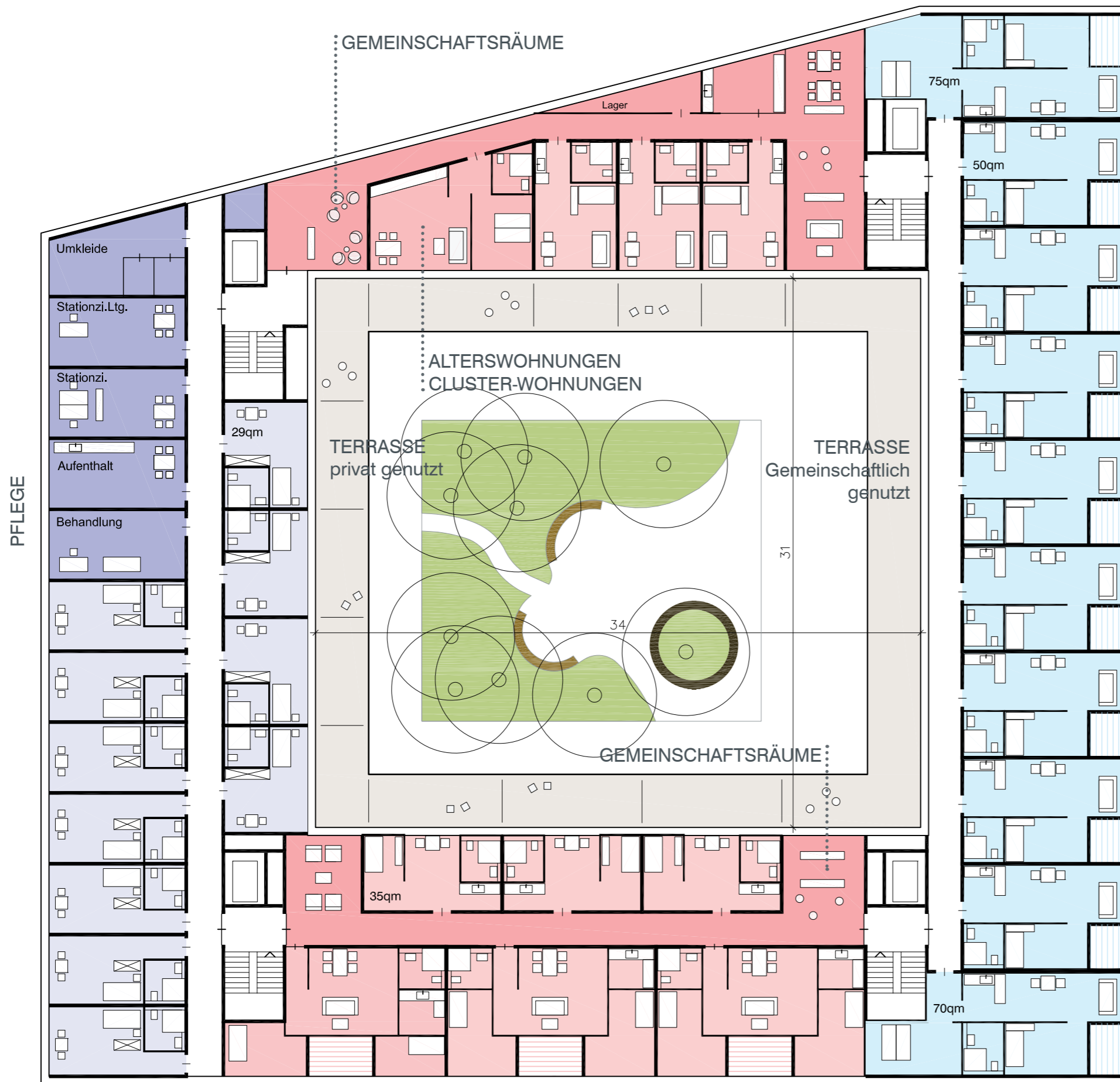
ALTERSWOHNEN



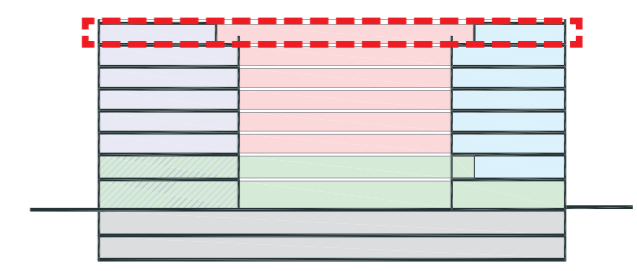
- Alterswohnen
- Alterswohnen Cluster
- Pflege

ALTERSWOHNUNGEN
 CLUSTER-WOHNUNGEN

B6

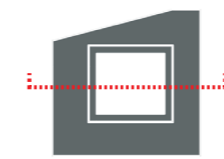
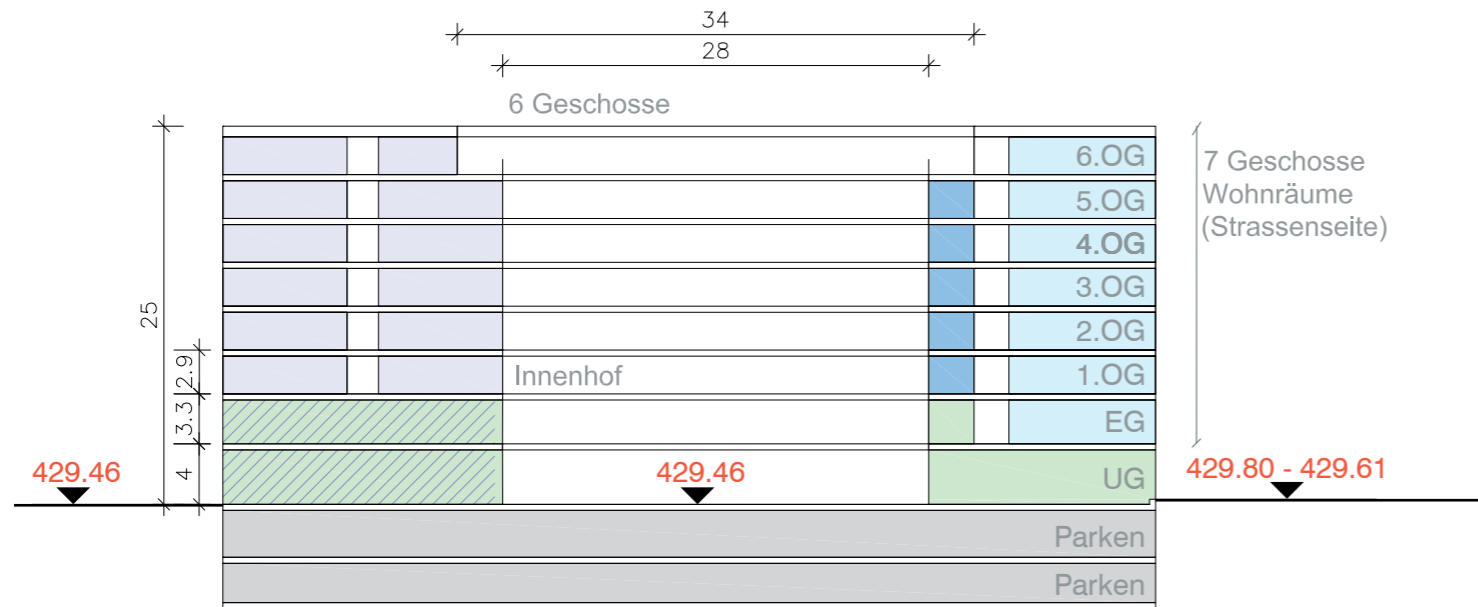


ALTERSWOHNEN

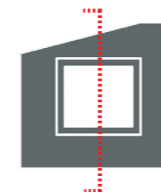
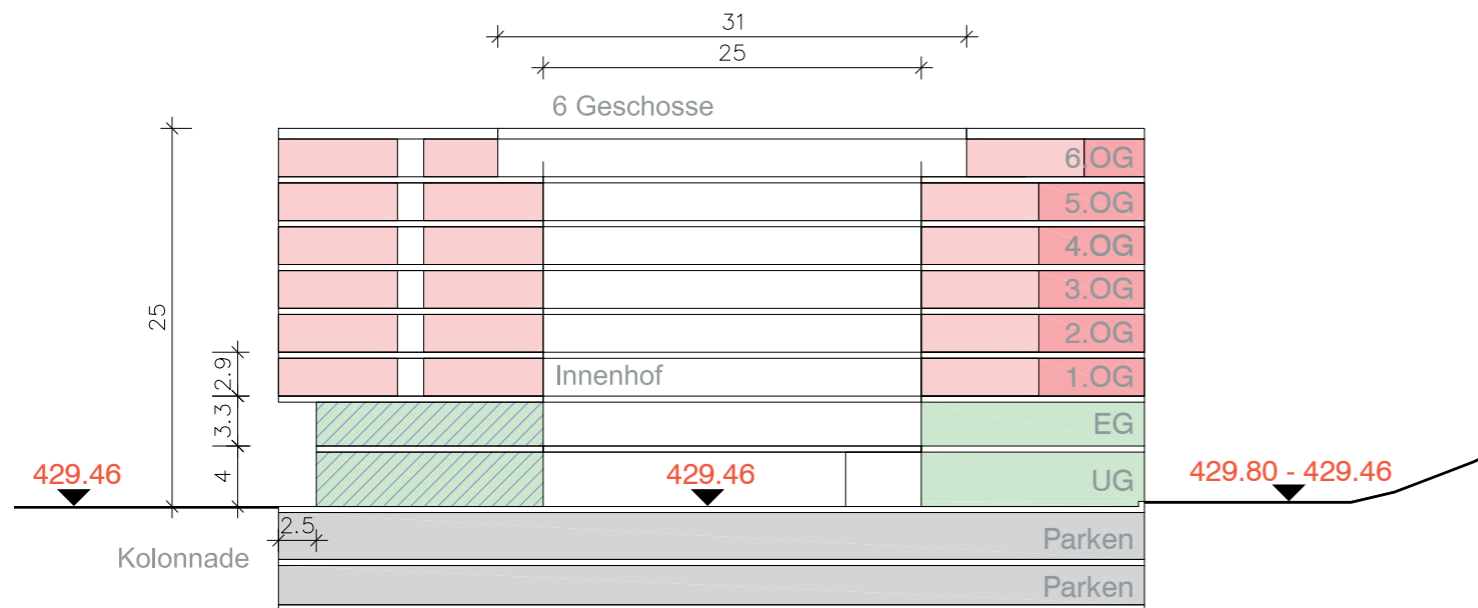


- Alterswohnen
- Alterswohnen Cluster
- Pflege

ALTERSWOHNUNGEN
 CLUSTER-WOHNUNGEN

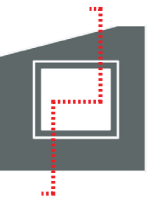
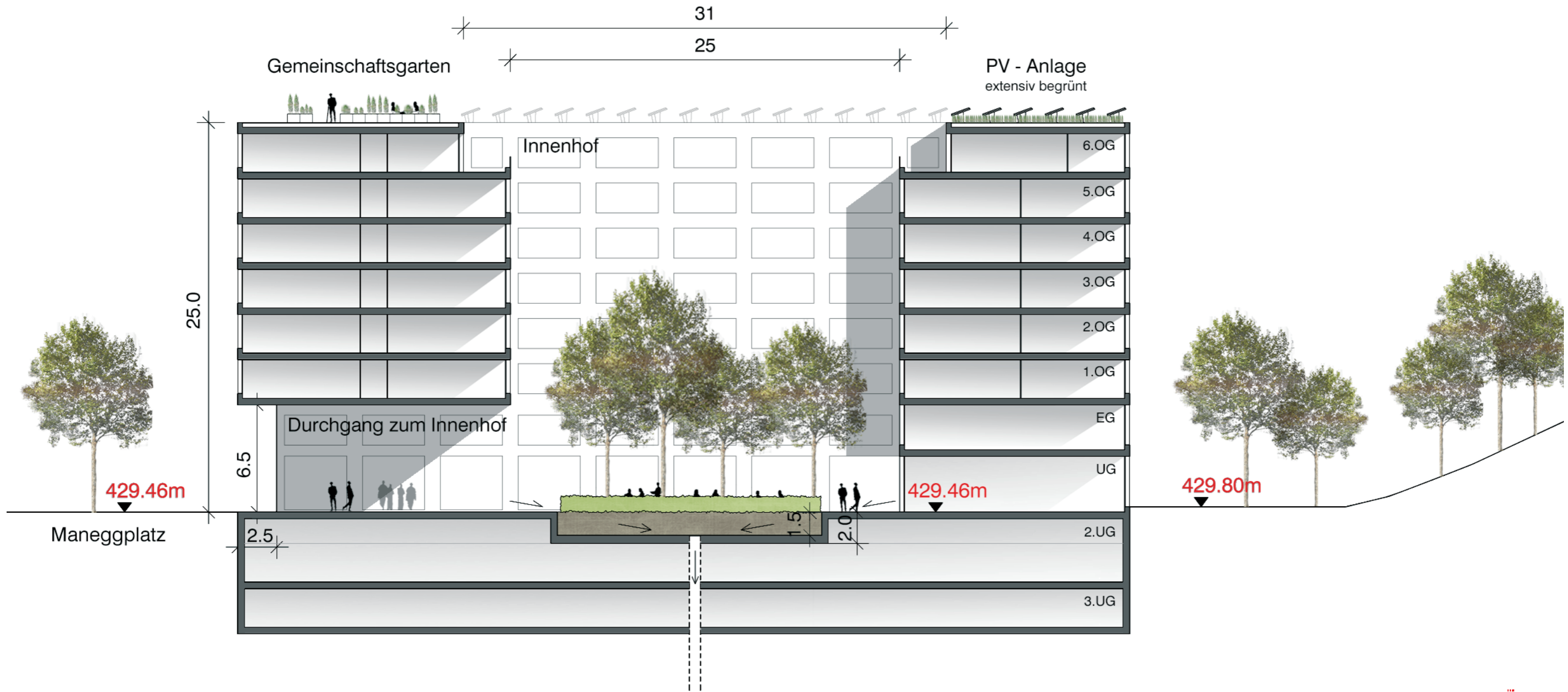


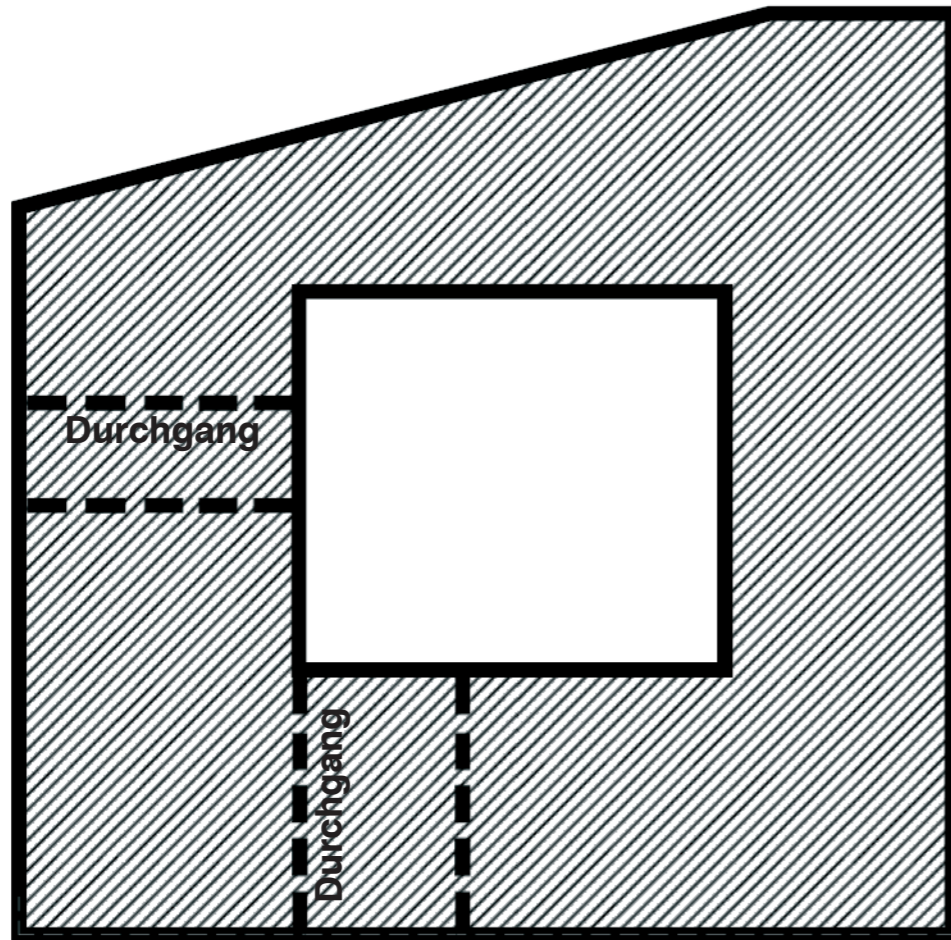
Systemschnitt NORD-SÜD



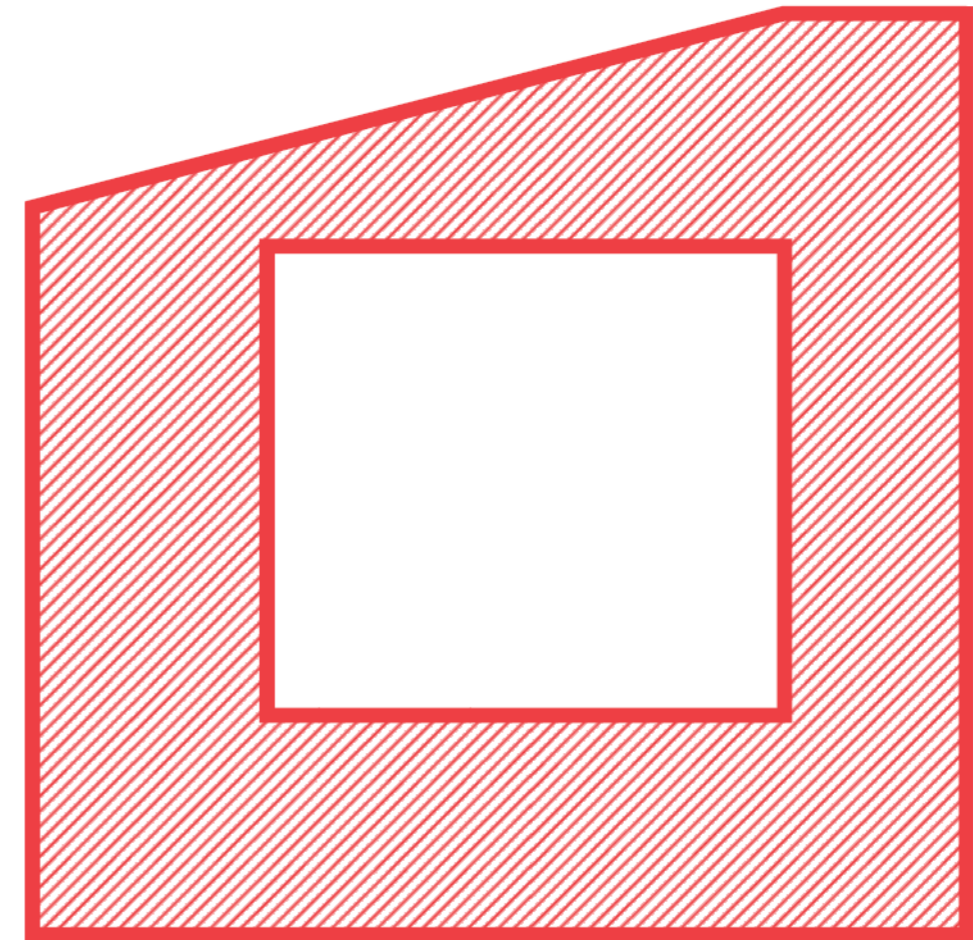
Systemschnitt OST-WEST

- Alterswohnen
- Alterswohnen Cluster
- Pflege
- Dienstleistungen Pflege
- Gewerbe / Dienstleistungen

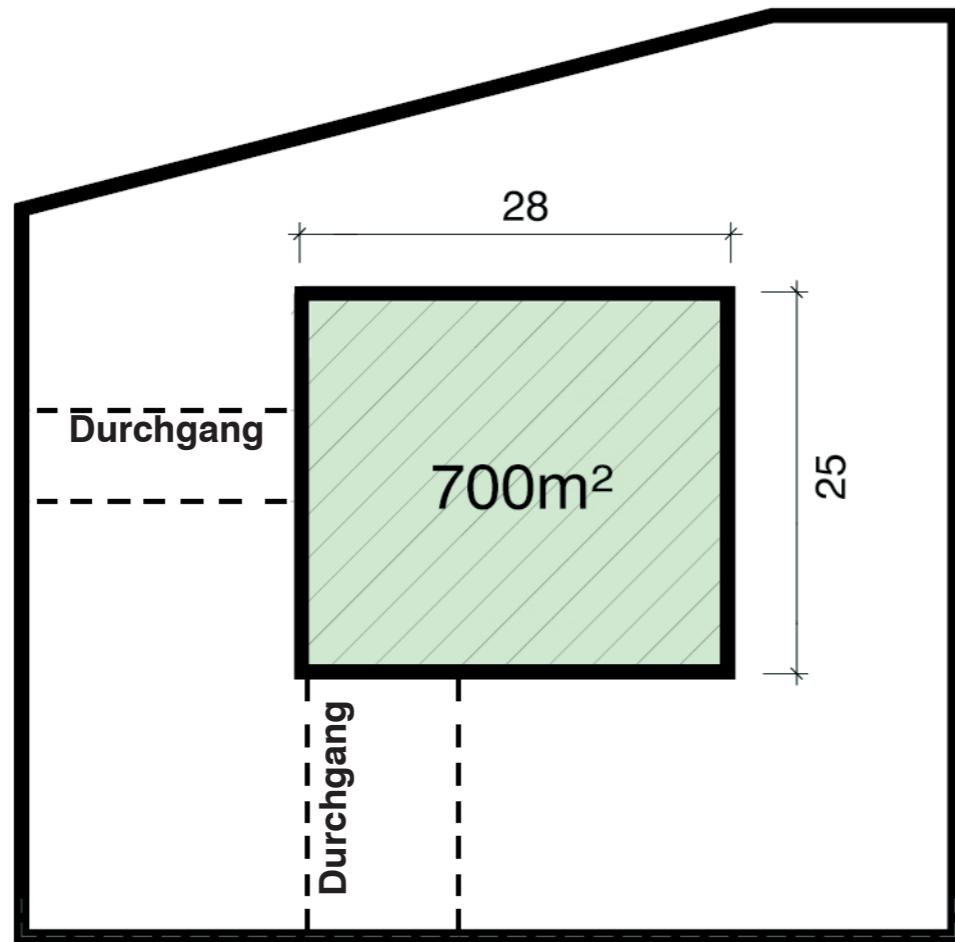




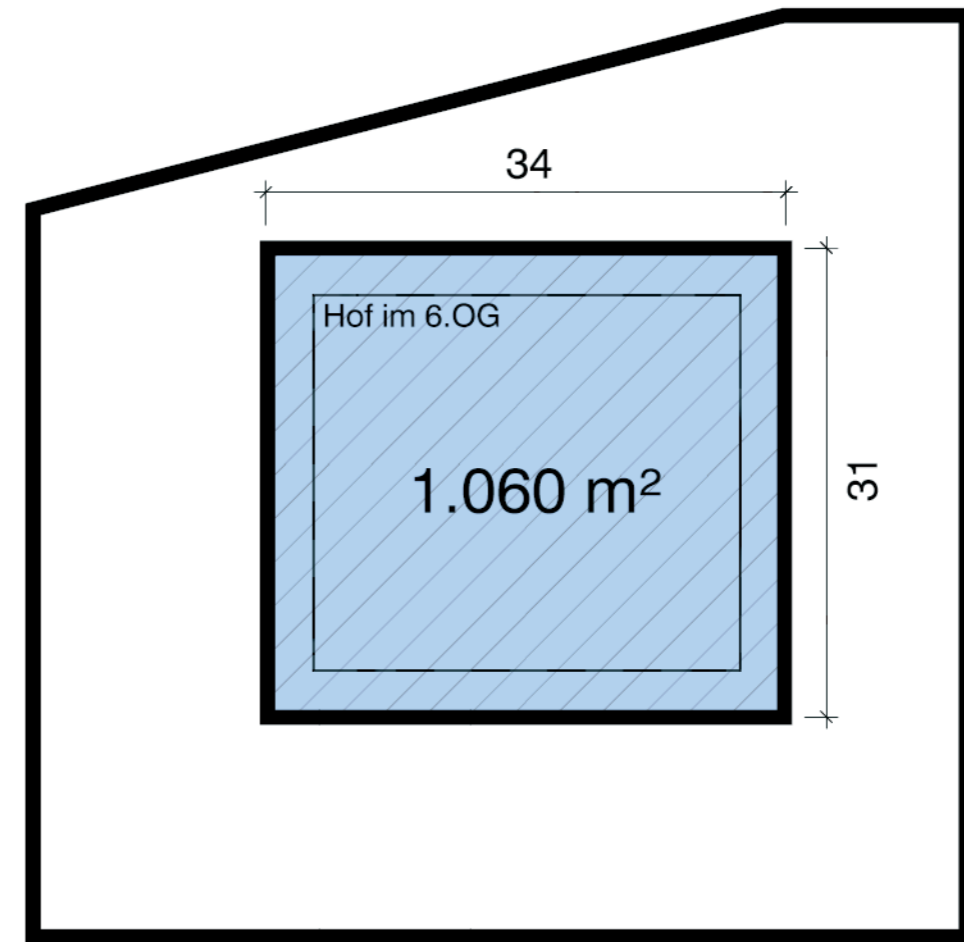
Footprint / überbaute Fläche 1.OG - 5.OG



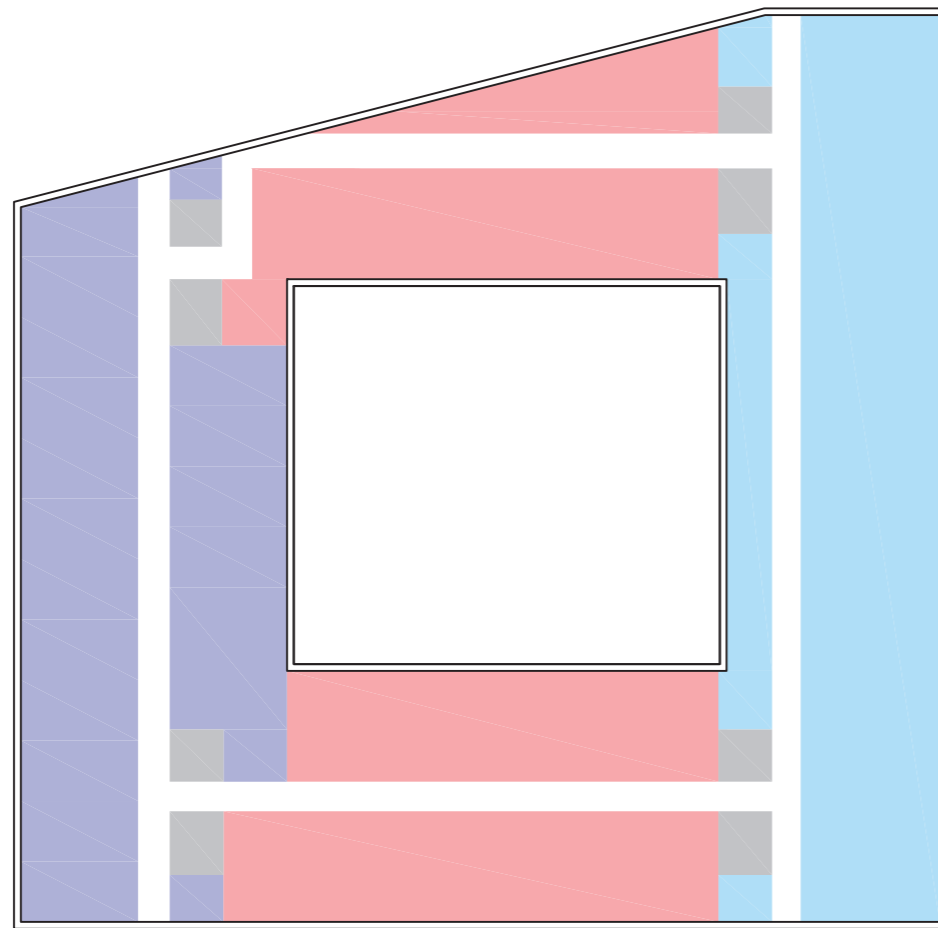
Footprint / überbaute Fläche 6.OG



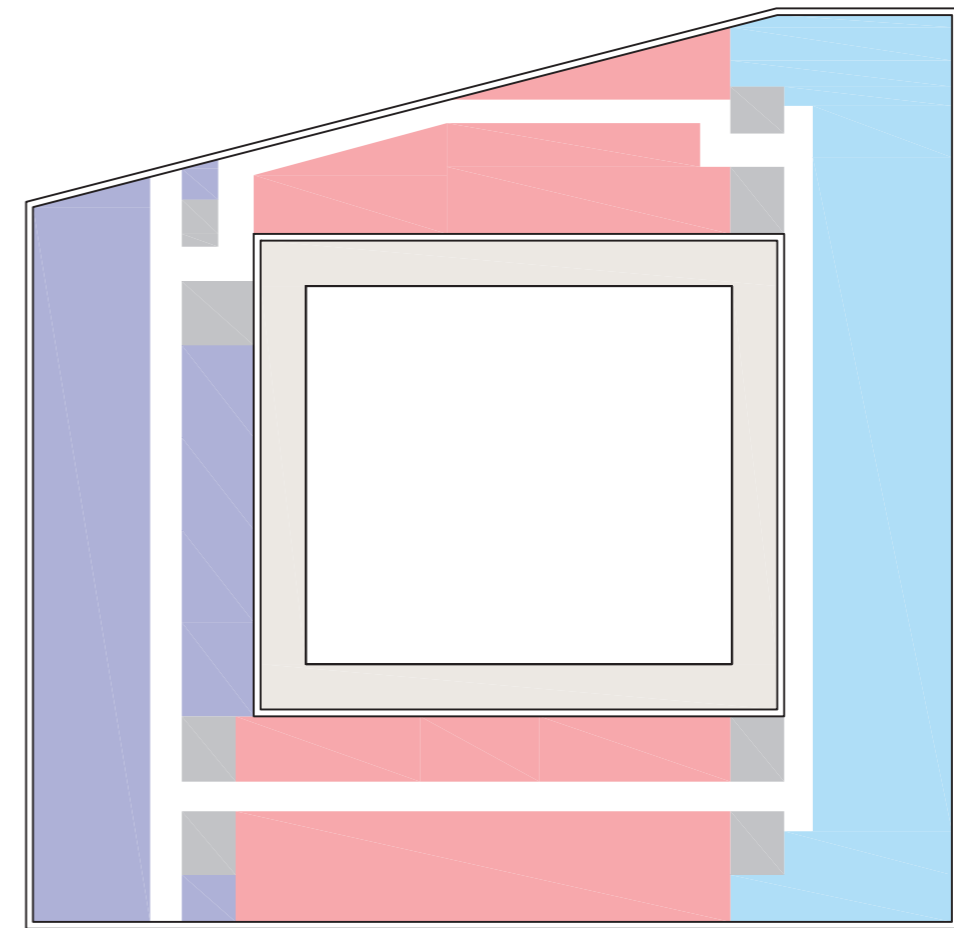
Innenhof 1.OG - 5.OG



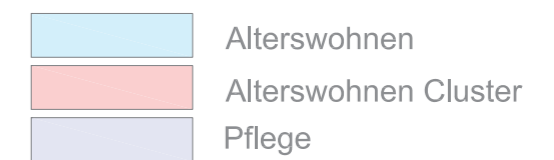
Innenhof 6.OG



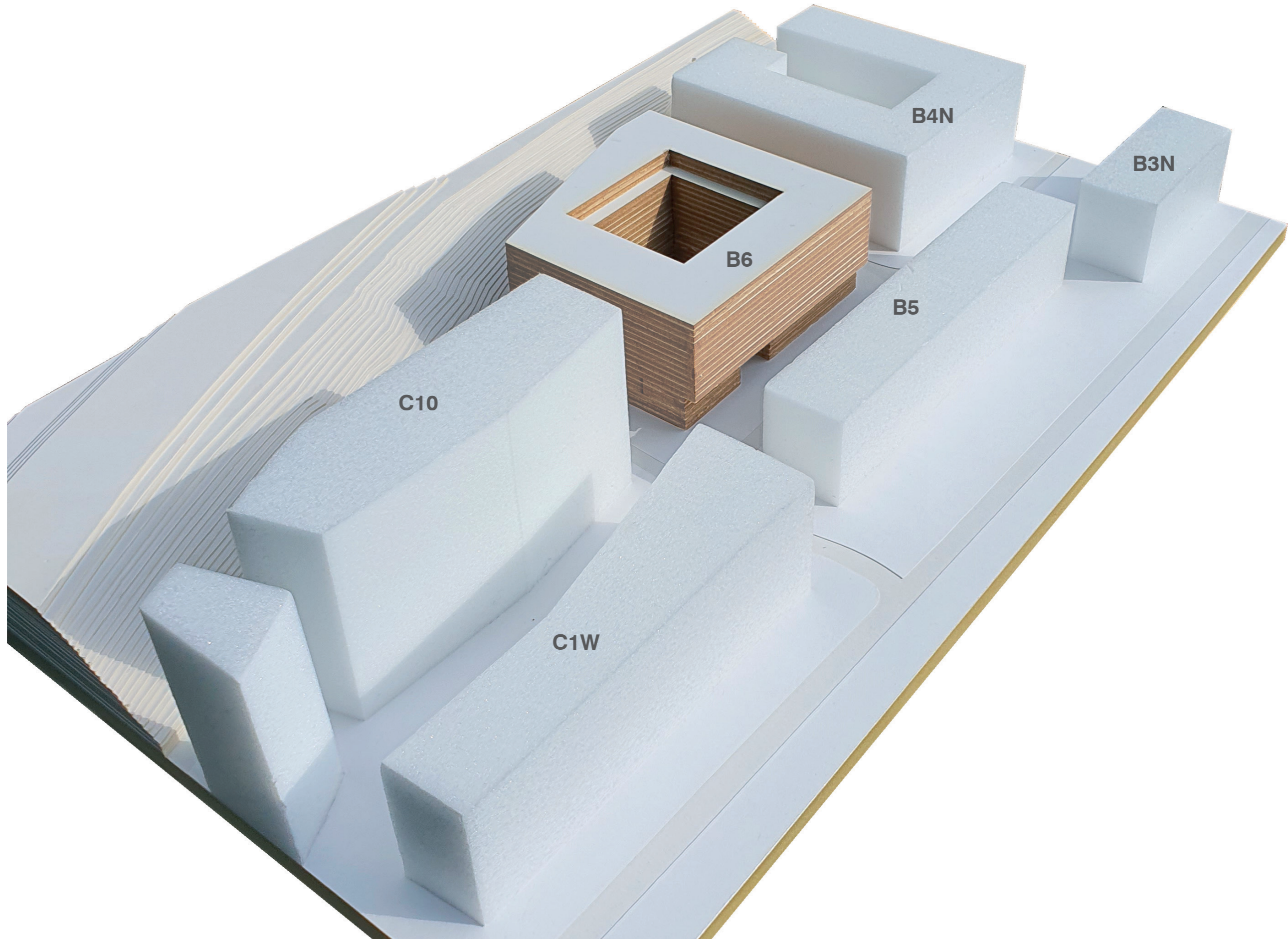
Schematische Aufteilung 1.OG - 5.OG

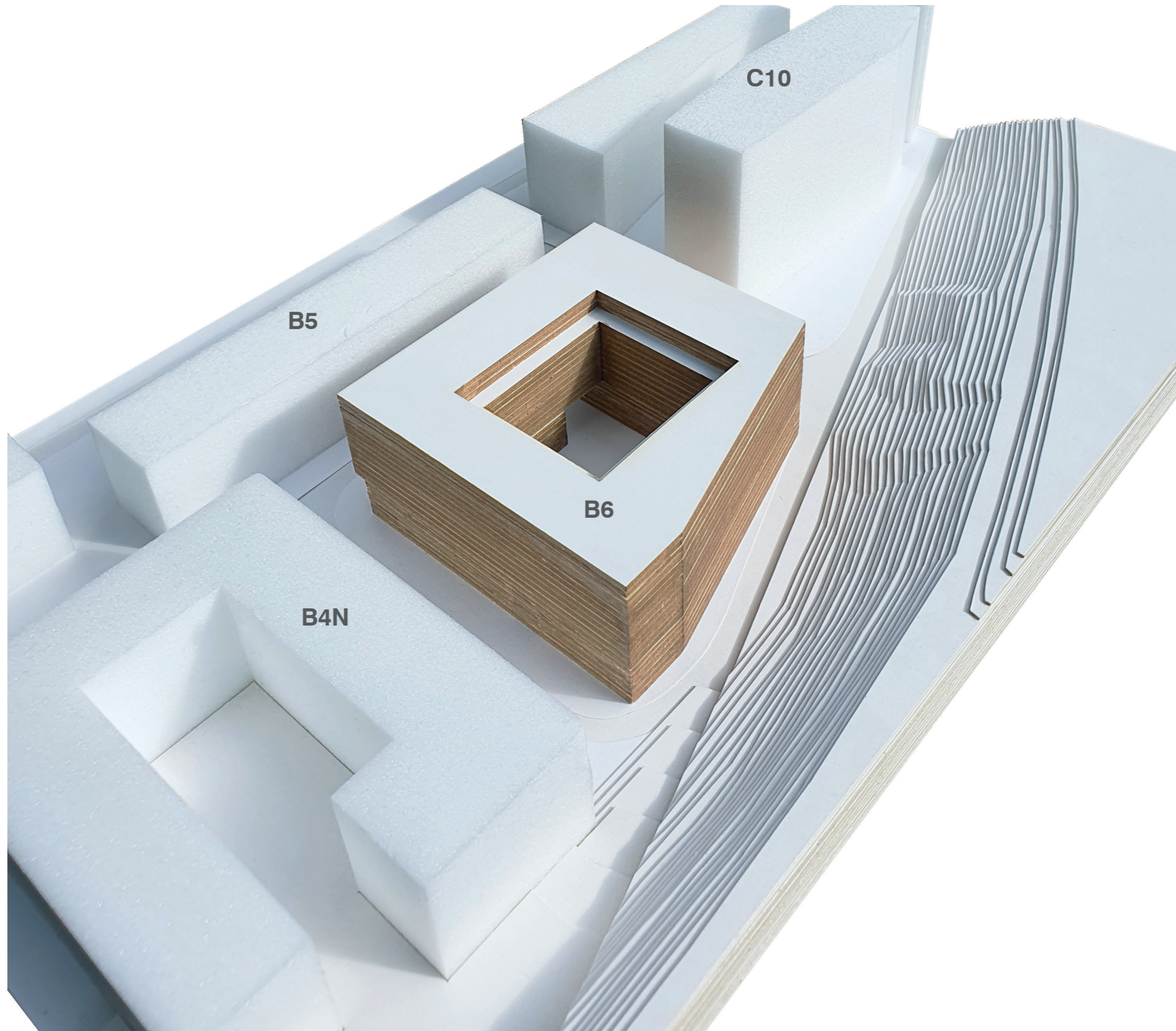


Schematische Aufteilung 6.OG



Schematische Aufteilung Nutz- und Nebenflächen | M 1:500





TEIL 2 FREIRAUM

VOGT

1712-7 Green City Zürich Süd Freiraum Machbarkeitsstudie B6

Broschüre

06.10.2020

Team

Günther Vogt

Ralf Günter Voss

Gian-Luca Kämpfen

Bauherr

Losinger Marazzi

Hardturmstrasse 11

8005 Zürich

Architekten

JSWD

Masternusplatz 11

50996 Köln